

FOR LEASE: NW 23RD RETAIL SPACE

BUILDING INFO

Up to 5,610 square feet are available at the high profile corner of NW 23rd and Lovejoy in the iconic Nob Hill Neighborhood. This urban development consists of approximately 12,000 square feet, which is home to national tenants Francesca's and See Eyewear, as well as local darlings Little Big Burger and Pepinos. NW 23rd has long been considered a premier shopping and dining destination boasting some of the city's finest restaurants and retailers. Popular area cotenant includes Salt & Straw, Bamboo Sushi, Lush, and prAna.

Tenants of this property benefit from strong daytime population and traffic. Legacy Good Samaritan Medical Center is located adjacent to the property and boasts over 2,500 employees. Since it is located on the Portland City Streetcar, this location conveniently connects to the Pearl District, City Center, and Portland State University.

DEMOGRAPHICS	1 MILE	2 MILE
Population	36,067	74,006
Median Age	37.5	38.2
Avg. HH Income	\$108,671	\$99,157
Daytime Workforce	45,865	162,223



NW 23RD RETAIL

950 NW 23rd Ave, Portland, OR

FOR LEASING INFORMATION: 503.283.5365

CE JOHN

SINCE 1947



NW 23RD RETAIL

950 NW 23rd Ave, Portland, OR

FOR LEASING INFORMATION: 503.283.5365

CE JOHN

SINCE 1947



NW 23RD RETAIL

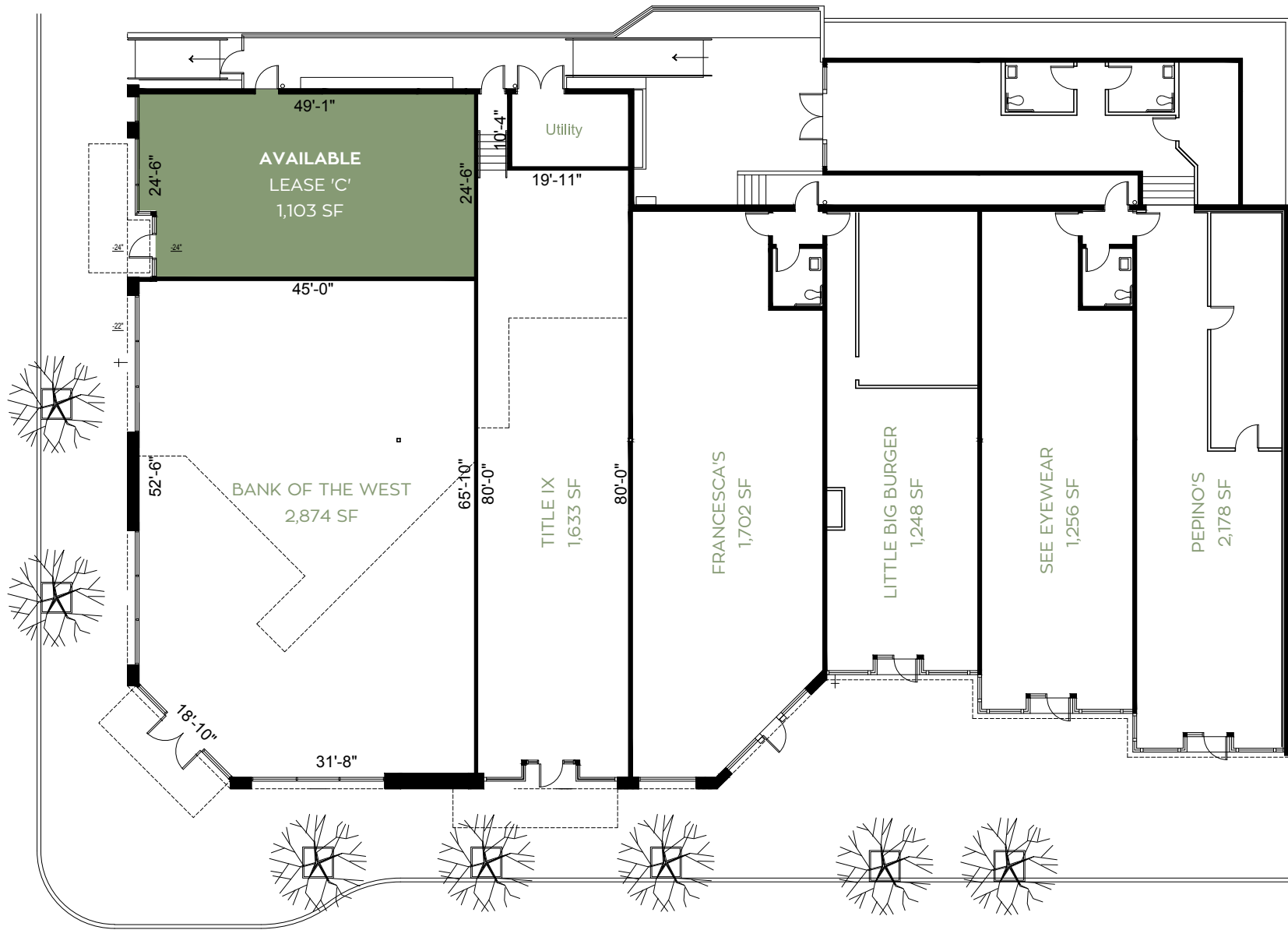
950 NW 23rd Ave, Portland, OR

FOR LEASING INFORMATION: 503.283.5365

CE JOHN

SINCE 1947

NW LOVEJOY STREET



NW 23RD AVENUE

NW 23RD RETAIL

950 NW 23rd Ave, Portland, OR

FOR LEASING INFORMATION: 503.283.5365

CE JOHN

SINCE 1947



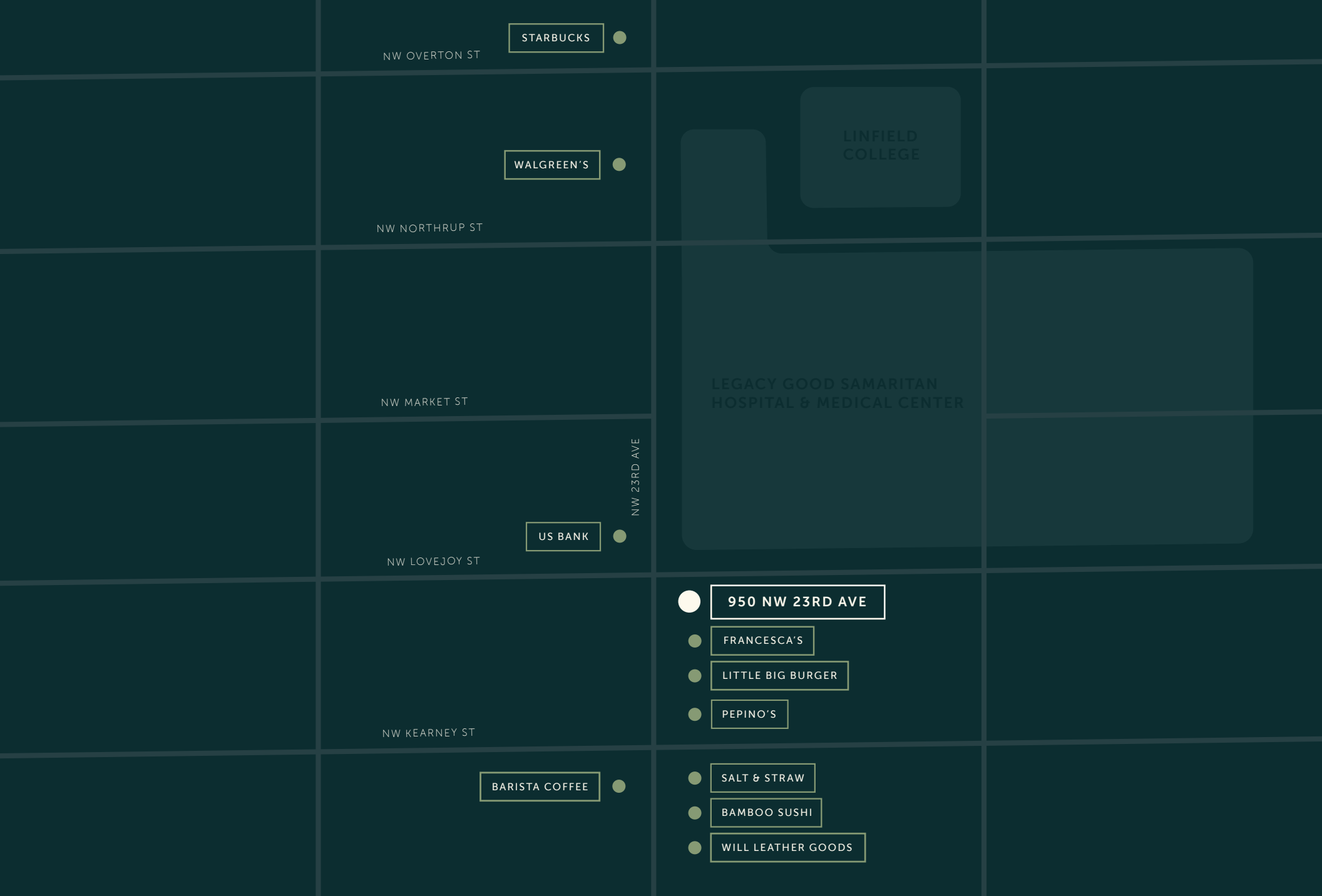
NW 23RD RETAIL

950 NW 23rd Ave, Portland, OR

FOR LEASING INFORMATION: 503.283.5365

CE JOHN

SINCE 1947



NW 23RD RETAIL
950 NW 23rd Ave, Portland, OR
FOR LEASING INFORMATION: 503.283.5365

CE JOHN

SINCE 1947